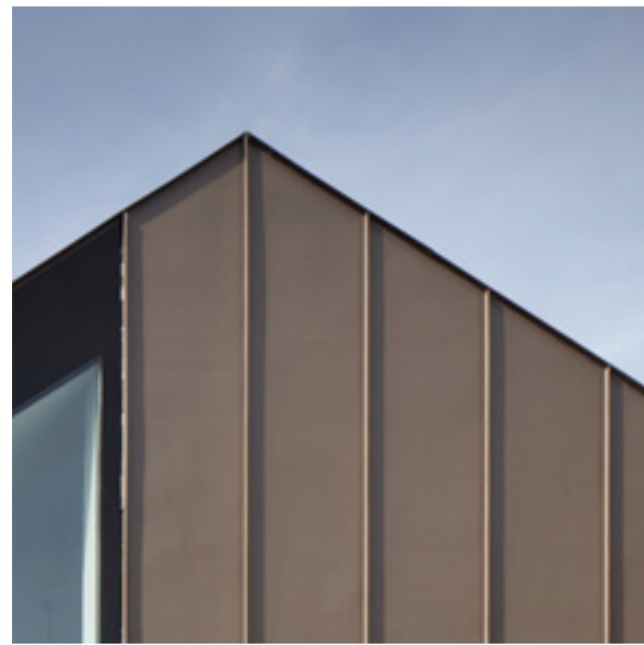




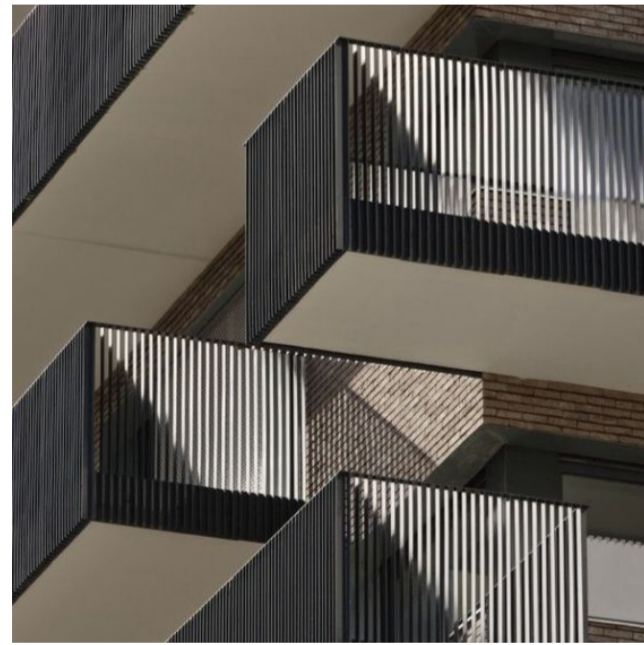
East Elevation Key



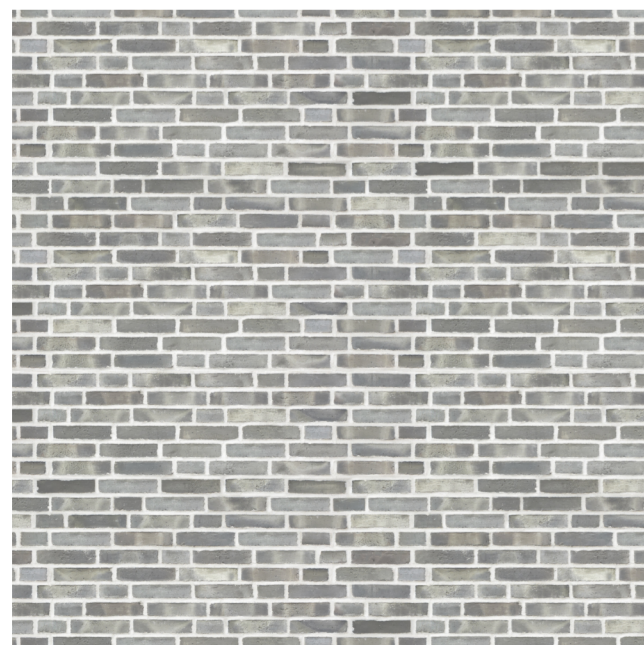
Protruding Windows



Standing Seam 'red' zinc Cladding



Metal Balcony Balustrade



Grey Brick

MATERIAL PRECEDENTS



PARTIAL EAST ELEVATION  
RESIDENTIAL

Inset concealed gutter with no fascia

Metal balustrade balcony

Standing Seam 'red' zinc cladding

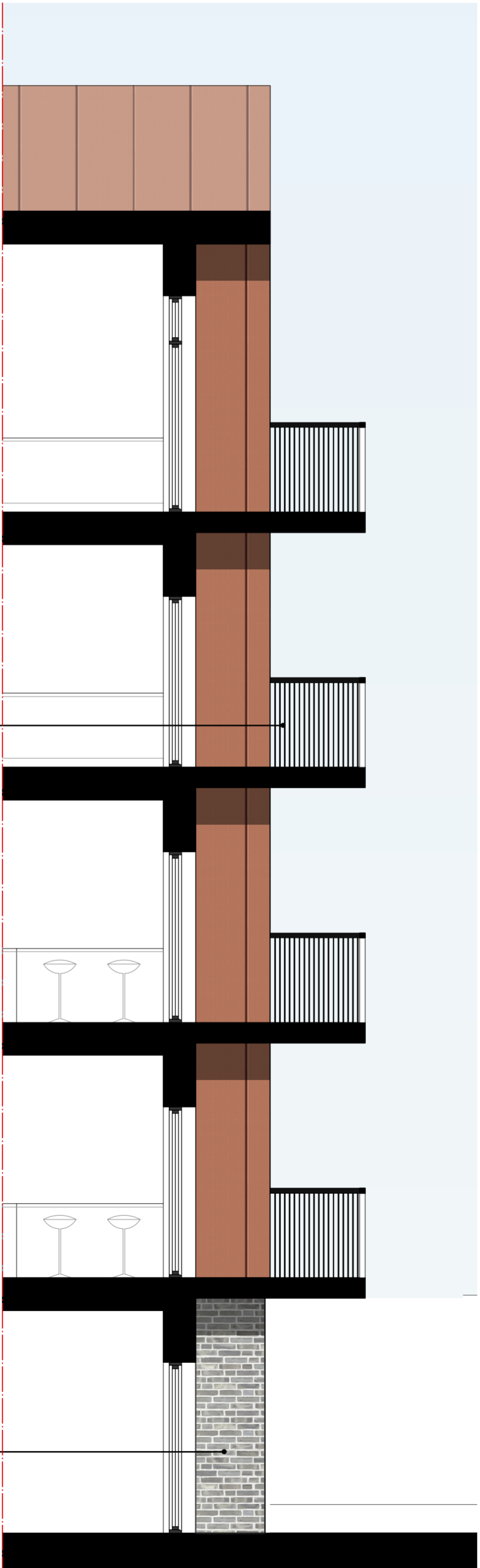
Zinc Protruding Window Frame

PPC aluminium composite window system

Lower infill panel

GRC cladding on extended balcony

Grey clay facing brickwork



SECTION

rev	date	description
-----	------	-------------

stock  
wool

The Pump House 19 Hooper Street  
London E1 8BU 020 7264 8600  
info@stockwool.co.uk

Client

Poplar Harca

Project

Leaside Business Centre

Drawing

Partial East Elevation  
Residential Material Details

Status

Planning

Scale 1:50 @ A1  
1:100 @ A3  
CAD File 3419-A-E--Elevations  
Date 28.06.19  
Drawn BS  
Checked NC

Project no_Drawing no	Revision
PL[20]213	-